

Software information

⚙️ NVR Recorder (DVR)-Ver 5.5



- ❖ Support various recording methods (motion detection, continuous and sensor)
- ❖ H.264, MPEG4 & M-JPEG compression codec
- ❖ Setup image quality & frame rate for each camera
- ❖ Support watermark
- ❖ Voice chatting with client
- ❖ Max 32CH sensor input & Max 16CH alarm output
- ❖ Pan, Tilt & Zoom control Basically, included 26 kinds of receiver protocol
- ❖ Management of client connection in dynamic IP environment using Web based Client Management Software
- ❖ Support Web Server, it can be connected through Internet Explorer without client program.
- ❖ Support 1CH spot monitor switching signal Management of Client User register & delete user, authorization setting for each user
- ❖ Evervision software loading base NVR(network video recording)
- ❖ connection our Standalone DVR+IP Camera+Video Encoder At the same time

⚙️ Replay & Search



- ❖ Max 32ch, Support picture division
- ❖ Search motion detection
- ❖ Various search function
- ❖ Easy handling date, time option
- ❖ adjust Bright and back light, zoom function
- ❖ JPEG image file save stop video
- ❖ Output stop video by print
- ❖ The same time video & audio backup AVI & DAT format
- ❖ Support backup view data ,replay
- ❖ Thumbnail search- 1 minute,10 minute unit image search

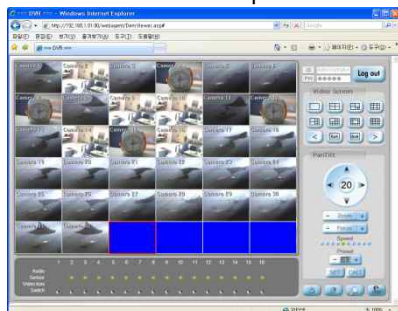
⚙️ Client (CMS)



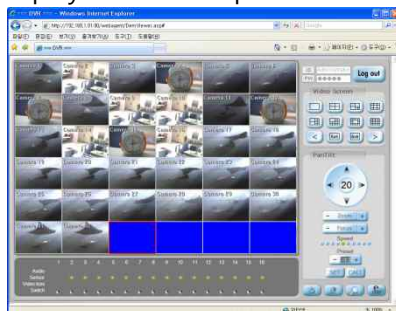
- ❖ TCP/IP using transfer real-time video, audio.
- ❖ Site management using address Data.
- ❖ The same time connection management MAX 1,024 site.
- ❖ MAX 32,768 camera video monitoring possible.
- ❖ Screen exchange the other site one click.
- ❖ Client search DVR saved data and audio AVI backup,
- ❖ Remote Client exchange DVR setup.
- ❖ Adjust transfer speed video, resolution.
- ❖ Adjust Pan/Tilt/Zoom.
- ❖ Chating two way audio.
- ❖ Various screen division. (64ch)
- ❖ connection management PC DVR + Standalone DVR + IP camera + Network Video Sever At the same time
- ❖ Support popup mode
- ❖ Support template function(connection at the same time)

⚙️ Internet explore

- Realtime video receipt



- Replay search receipt



⚙️ Support PDA & Smart Phone



- ❖ A wireless client connection with PDA & Smart Phone
- ❖ CDMA using connection data communication
- ❖ IEEE 802.11b and 802.11g Wireless
- ❖ Support wireless network
- ❖ data search of DVR storage
- ❖ JPEG image file save stop video

PC based N(D)VR Card

Features

- ❖ Image Resolution(NTSC/PAL): Max. 720 X 480 / 720 X 576
- ❖ Emergency Restore: Watch-dog function
- ❖ Support External Monitor
 - > ES Series: Switching > ESCR/MP/HP Series: Multi-view
- ❖ PTZ Control: Support with Extension Card (RS-485, RS-422)
- ❖ DI / DO: Support with Extension Card (Max. 16/16)
- ❖ Camera Input Port: BNC (8CH Multi Cable with 16CH DVR Card)
- ❖ Network: 10/100 Fast Ethernet, PSTN
- ❖ Network Connection: Client Program, Internet Explorer, Pocket PC 2003 Install PDA and iphone support web browser
- ❖ Supported O.S: Microsoft Windows 2000/XP/Vista



⚙ Software MPEG4 Compression Cards

	ES0403	ES0412	ES1612	ES1624	ES3296
Picture					
Input Camera	4CH		16CH		32CH
Recording(NTSC/PAL)	30/25 fps@CIF	120/100 fps@CIF	120/100 fps@CIF	240/200 fps@CIF	960/800fps@CIF
Audio Input(RCA)	1CH	4CH	4CH	8H	16CH
Multi Card	4EA	2EA	2EA	-	2EA
Compression Codec	M-JPEG & MPEG4 (Selectable)				

⚙ Software MPEG4 Compression Card & Real-Time Display Cards

	ESCR12	ESCR24	ESCR48
Picture			
Input Camera	16CH		
Display(NTSC/PAL)	480/400 fps		
Recording(NTSC/PAL)	120/100 fps@CIF	240/200 fps@CIF	480/400 fps@CIF
Audio Input(RCA)	4CH	16CH	16CH
Compression Codec	M-JPEG & MPEG4 (Selectable)		



⚙ Hardware MPEG4 Compression Cards

	HP4000EX	HP3000	MP3000
Picture			
Input Camera	16CH	8CH	8CH
Recording(NTSC/PAL)	480/400 fps@D1	240/200 fps@D1	240/200 fps@D1
Audio Input(RCA)	16CH	8CH	8CH
Multi Card	2CH	8CH	8CH
Compression Codec	H.264	H.264	MPEG4 ASP @ Level 5

Network Video Encoder -1 channel D1 Network Video Encoder (H.264)

Features

- ❖ 1-4 channel H.264 D1 Network Video Encoder
- ❖ Built-in Video Content Analysis
- ❖ 1-4 channel Audio Input, 1-4 channel Audio Output
- ❖ H.264 25/30 FPS@D1
- ❖ Video Compression: H.264, MPEG-4, MJPEG (Dual Stream)
- ❖ Deinterlacing on DSP
- ❖ Audio Compression: G.711
- ❖ RS-232C, RS-485 Support
- ❖ Burnt-in Text, Video Motion Detection Support
- ❖ USB 2.0 Support (External storage, Wireless LAN)
- ❖ Providing only SDK, not Complete Application Software

		NVC4000	NVC1000
Picture			
Video	Input	4CH	1ch
	Output	1 Loop Out	
	Compression	H.264, MPEG4, M-JPEG (Selectable)	
	Number of Streams	Dual Stream, Configurable	
	Resolution(NTSC/PAL)	D1(720x480), 2CIF(704x240), CIF(352x240), QCIF(176x120)	
	Compression FPS	30/25 fps@D1	
Audio	Input	4CH	1CH
	Output	4CH	1CH
	Compression	G.711	G.711
Digital Input / Output		4CH	1 / 1 CH
PTZ Port		RS-485,RS-232	RS-485, RS-232
Protocol		TCP/IP, UDP/IP, HTTP, RTSP, RTCP, RTP/UDP, RTP/TCP, SNTP, mDNS, UPnP, SMTP, SOCK, IGMP, DHCP, FTP, DDNS, PPPoE, SSL v2/v3, IEEE 802.1X, SNMP, SSH, and IPv6	
USB 2.0		Support	Support
SD Memory		Support	Support
Power Consumption(12V)		DC12V 1100mA	DC12V 240mA
Power over Ethernet		Support (IEEE 802.3af)	
Temperature		0°C ~ 60°C (32°F ~ 140°F)	
Humidity		Up to 85% RH	
Dimension		137(W) x 38(H) x 189(D) mm	103(W) x 38(H) x 141(D) mm
Weight		780 g	385 g
Video Content Analysis (Standard)	High Performance	Advanced Tracking Algorithm, Low False Alarm Rate	
	Easy to Use	Intuitive Web Browser Interface	
	Detection Zones	Multi-segment Polygons and Lines	
	On-screen Display	Real-time Display of Tracking Data and Events	
Video Content Analysis (option)	Detection Behavior	Direction, Stopping, Loitering, Entering, Exiting, Appear, and Disappear Filters	
	3D Behavior	Perspective Corrected Size and Speed Filters	
	Statistics	Counting Functions and Other Statistics	
	Meta Data	Binary XML Format	
Image Stabilization (Option)	Electronic Stabilization	Removes Camera Sway	

Network Video Encoder -12-40 channel D1 Network Video Encoder (H.264)

Features



- ❖ 12-40 channel H.264 D1 Network Video Encoder
- ❖ Built-in Video Content Analysis
- ❖ 1-4 channel Audio Input, 1-4 channel Audio Output
- ❖ H.264 25/30 FPS@D1
- ❖ Video Compression: H.264, MPEG-4, MJPEG (Dual Stream)
- ❖ Deinterlacing on DSP
- ❖ Audio Compression: G.711
- ❖ RS-232C, RS-485 Support
- ❖ Burnt-in Text, Video Motion Detection Support
- ❖ USB 2.0 Support (External storage, Wireless LAN)
- ❖ Providing only SDK, not Complete Application Software

		NVE40K	NVE12K	NVC4000-R12/R40
Picture				
Video	Input	40CH	12ch	
	Output	1 Loop Out		
	Compression	H.264, MPEG4, M-JPEG (Selectable)		
	Number of Streams	Dual Stream, Configurable		
	Resolution(NTSC/PAL)	D1(720x480), 2CIF(704x240), CIF(352x240), QCIF(176x120)		
	Compression FPS	30/25 fps@D1		
Audio	Input	40CH	12CH	4CH
	Output	40CH	12CH	4CH
	Compression	G.711	G.711	G.711
Digital Input / Output		40CH	12 / 12 CH	4 / 4 CH
PTZ Port		RS-485,RS-232	RS-485, RS-232	
Protocol		TCP/IP, UDP/IP, HTTP, RTSP, RTP, RTCP, RTP/UDP, RTP/TCP, SNTP, mDNS, UPnP, SMTP, SOCK, IGMP, DHCP, FTP, DDNS, PPPoE, SSL v2/v3, IEEE 802.1X, SNMP, SSH, and IPv6		
USB 2.0		Support	Support	Support
SD Memory		Support	Support	Support
Power Consumption(12V)		DC12V 1100mA*4	DC12V 240mA*4	DC12V 240mA
Power over Ethernet		Support (IEEE 802.3af)		
Temperature		0°C ~ 60°C (32°F ~ 140°F)		
Humidity		Up to 85% RH		
Dimension		482(W) x 177(H) x 325(D) mm	482(W) x 44(H) x 286(D)mm	268(W) x 128(H) mm
Weight		6.90 kg	1.80 kg	380 g
Video Content Analysis (Standard)	High Performance	Advanced Tracking Algorithm, Low False Alarm Rate		
	Easy to Use	Intuitive Web Browser Interface		
	Detection Zones	Multi-segment Polygons and Lines		
	On-screen Display	Real-time Display of Tracking Data and Events		
Video Content Analysis (option)	Detection Behavior	Direction, Stopping, Loitering, Entering, Exiting, Appear, and Disappear Filters		
	3D Behavior	Perspective Corrected Size and Speed Filters		
	Statistics	Counting Functions and Other Statistics		
	Meta Data	Binary XML Format		
Image Stabilization (Option)	Electronic Stabilization	Removes Camera Sway		

IP Megapixel Speed Dome Camera

Features

- Up to Optical 20X, Digital 16X
- H.264 Full Frame at HD1080p
- Video Compression: H.264, MJPEG
- Dual Stream
- Two-way Audio with G.711
- Day & Night (IR Cut Filter), DSS
- Burnt-in Text, Video Motion Detection Support
- Comprehensive SDK Support
- Embedded Video Analytics
- Stealth Spin(World Most Silent Speed Dome)
- 0.002° Dome System Accuracy
- Controlling Pan/Tilt Speed While Zooming

		IPX4202HD	IPX4602HD
Picture			
Video	Input	1CH	1ch
	Output	1 Loop Out	
	Compression	H.264, MPEG4, M-JPEG (Selectable)	
	Number of Streams	Dual Stream, Configurable	
	Resolution(NTSC/PAL)	1920x1080, 1280x720, 800x450 480x270, 320x180	
	Compression FPS	30/25 fps@D1	
Audio	Input	1CH	1CH
	Output	1CH	1CH
	Compression	G.711	G.711
Digital Input / Output		4CH/2CH	4CH/2CH
PTZ Port		RS-485,RS-232	RS-485, RS-232
Protocol		TCP/IP, UDP/IP, HTTP, RTSP, RTCP, RTP/UDP, RTP/TCP, SNTP, mDNS, UPnP, SMTP, SOCK, IGMP, DHCP, FTP, DDNS, PPPoE, SSL v2/v3, IEEE 802.1X, SNMP, SSH, and IPv6	
Power Source		AC 24V	AC 24V
Power over Ethernet		Support (IEEE 802.3af)	
Temperature		Operating Range - DC12V: 0 °C ~ 50 °C (32 °F ~ 122 °F) - PoE+: 0 °C ~ 50 °C (32 °F ~ 122 °F)	
SD Memory (micro SD)		Built-in Micro SD slot(SD card not included) (Recommend Class 4 and higher for HD recordings)	
Dimension		Housing: 180(ø) x 240(H) mm	Housing: 248(ø) x 309(H) mm
Weight		2.1kg(4.64lbs)	4.6kg(10.14lbs)
Video Content Analysis (Standard)	High Performance	Advanced Tracking Algorithm, Low False Alarm Rate	
	Easy to Use	Intuitive Web Browser Interface	
	Detection Zones	Multi-segment Polygons and Lines	
	On-screen Display	Real-time Display of Tracking Data and Events	
Video Content Analysis (option)	Detection Behavior	Direction, Stopping, Loitering, Entering, Exiting, Appear, and Disappear Filters	
	3D Behavior	Perspective Corrected Size and Speed Filters	
	Statistics	Counting Functions and Other Statistics	
	Meta Data	Plain XML Format	

IP Megapixel Camera

Features

- ❖ **Key Features of IPE & IPN Series - [Video Analytics Included](#)** • Full HD IP Camera
- Embedded Intelligent Video Analytics
- Multi CODEC Support: H.264, MPEG-4, MJPEG (Dual Stream)
- Full HD Dome Camera
- RTSP/RTP based Interface
- Comprehensive SDK Support

	IPE1100M	IPE3500M	IPN1202HD	IPN3102HD	IPN3502HD	IPN2102 HD
Picture						
Description	Standard Box	Indoor/Outdoor Dome	Standard Box	Indoor	Outdoor	indoor
CCD Type / Size	Sony 1/3.2" 2M CMOS		1/2.7" 1080p CMOS			
Lens	3.8mm F1.0, Manual Iris	3.8mm F1.2 Vari-Focal	Option	2.8 – 11mm Vari-Focal	3.0 – 9.0mm Vari-Focal	1.05mm F2.8 2Megapixel
Digital Zoom	N / A		N/A	N/A		
Video Compression	H.264, M-JPEG & MPEG4 (Selectable per Channel)					
Resolution(NTSC/PAL)	UXGA 1600 X 1200		1920 x 1080, 1280 x 720, 800 x 450, 480 x 270, 320 x 180			
Compression FPS	12fps@HD720 5fps@UXGA					
Audio Input / Output	1 / 1 CH					
Audio Compression	G.711					
PoE	Support(Optional)			Supported (IEEE 802.3af)		
Digital Input / Output	1 / 1 CH			1 / 1 CH		
PTZ Port	N/A		N/A			
Protocol	TCP/IP, UDP/IP, HTTP, RTSP, RTCP, RTP/UDP, RTP/TCP, SNMP, mDNS, UPnP, SMTP, IGMP, DHCP, DDNS, SSL v2/v3, IEEE 802.1X, SSH, SNMP v2/v3					
Power Source	12VDC 1A		12VDC 400mA			
Operating Temperature	0°C ~ 60°C (32°F ~ 140°F)					
Storage Temperature	-20°C ~ 60°C (-4°F ~ 140°F)					
Humidity	Up to 85% RH					
Dimension	55(W) x 55(H) x 94.2(D) mm	150(ø) x 113(H) mm, Dome100	71(W) x 64(H) x 140(D) mm	144(ø) x 121(H) mm,	115(ø) x 129(H) mm	144(ø), 63.5(H) mm
Weight	260 g	1080g	500 g	520g	1.2kg	600g

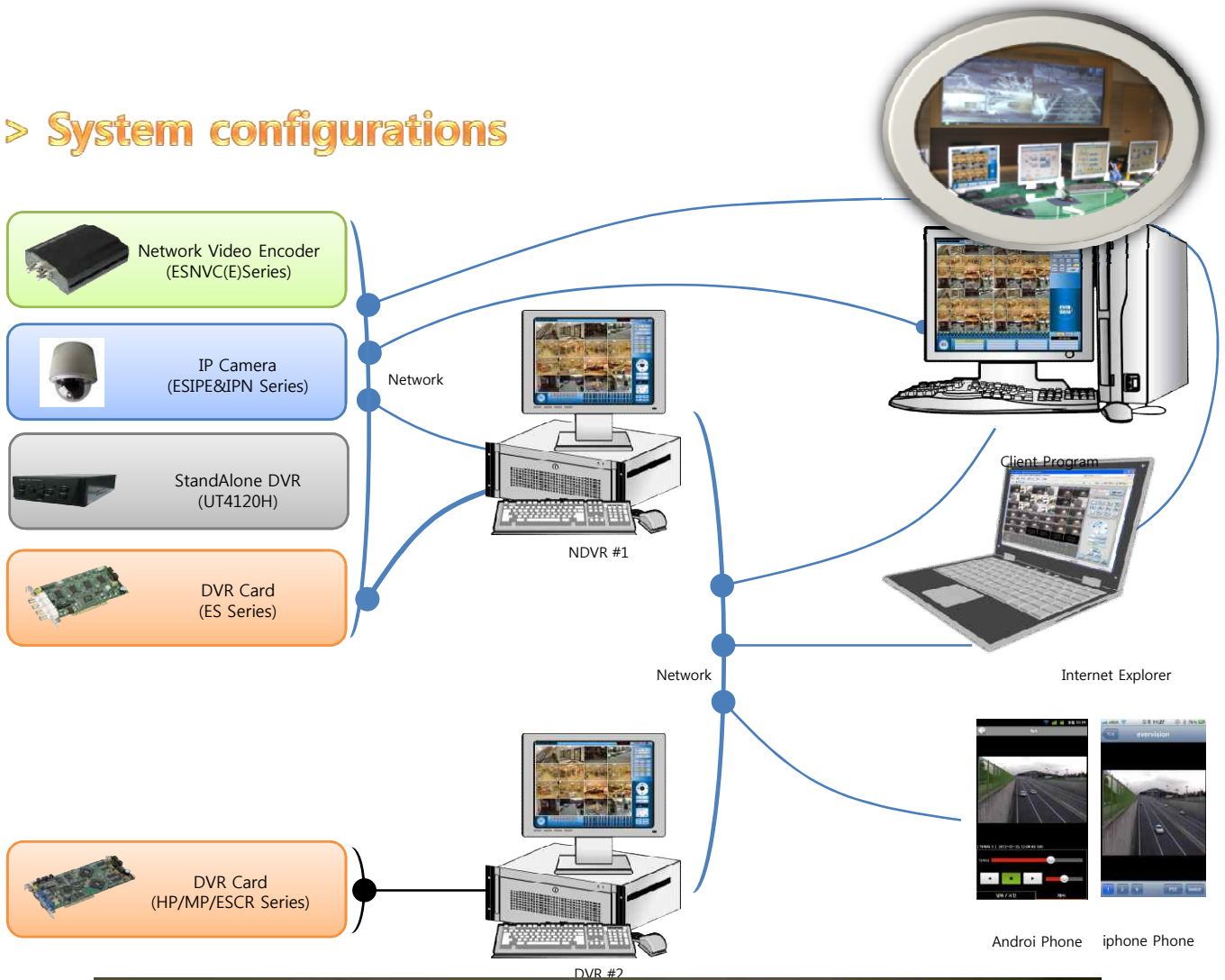
Features

- ❖ H264 MPEG4 D1 Full Frame Network Video Encoder
- ❖ Multi Codec Support: H.264, M-JPEG, MPEG4
- ❖ RTSP/RTP – based Interface
- ❖ De-interlacing in Hardware Encoding Engine
- ❖ Video Stream Encryption
- ❖ Text OSD Support (Inserted before Compression)
- ❖ PoE (Power over Ethernet): Support (Option)
- ❖ Network: 10/100 Fast Ethernet
- ❖ DDNS(Dynamic Domain Name Service) Server Support
- ❖ Network Connection: Client Program, Recorder Program, Internet Explorer

	IPE100	IPE1100M	ESIPE3500-1111	ESIPE3500-1211	ESIPE4100(Indoor)	ESIPE4100(Outdoor)
Picture						
Description	Indoor Fixed Mini Dome	Standard Box	Indoor/outdoor Dome	Indoor/outdoor Dome	Indoor PTZ	Vandal Proof Outdoor PTZ
CCD Type / Size	Sony 1/3" Super HAD CCD	Sony 1/3" Super HAD CCD	Sony 1/3" Super HAD CCD		Sony 1/4" Super HAD CCD	
Lens	3.7, 4.3 mm Cone Pinhole	3~8 mm (Optional)	4~10.5mm Vari-focal Auto IRIS	4~10.5mm Vari-focal Auto IRIS	36X Optical F1.6-F4.5 F=3.4-122.4mm	
Digital Zoom	N / A				360X	
PTZ	N / A				0° ~ 360°	
Video Compression	H.264, MPEG4 & Mjpeg (Selectable per Channel)				H.264, M-JPEG & MPEG4 (Selectable per Channel)	
Resolution(NTSC/PAL)	720 x 576, 720 X 480, 704 X 480, 352 X 240 / 720X576, 704 X 576, 352 X 288					
Compression FPS	30/25 fps@D1					
Audio Input / Output	1 / 1 CH					
Audio Compression	G.711					
PoE	Support(Optional)				N / A	
Digital Input / Output	1 / 1 CH				4 / 2 CH	
PTZ Port	RS-485, RS-232					
Protocol	SNTP, DHCP, UDP, TCP, RTP, RTSP (Multicast)					
Power Source	DC12V 290mA	DC12V 290mA	12VDC 700mA		24VAC 1A	24VAC 2
Operating Temperature	0°C ~ 60°C (32°F ~ 140°F)					
Storage Temperature	-20°C ~ 60°C (-4°F ~ 140°F)					
Humidity	Up to 85% RH					
Dimension	87.5(Φ) x 66.0(H) mm	55(W)x55(H)x94.2(D) mm	Housing: 150(Ø) x 113(H) mm,	Housing: 150(Ø) x 113(H) mm)	Housing: 147(Ø) x 190(H) mm / 5.8"(Ø) x 7.5"(H) (indoor)	
Weight	120 g	868 g	1,080 g	1,080 g	1.9kg (5lbs) (indoor)	5.7 kg (outdoor)

- Evervision Products Network Configuration System

> System configurations



에버비전 실행한 센터 구축 예

Evervision Intelligent CCTV Information

Software (6.0 Version) N(D)VR

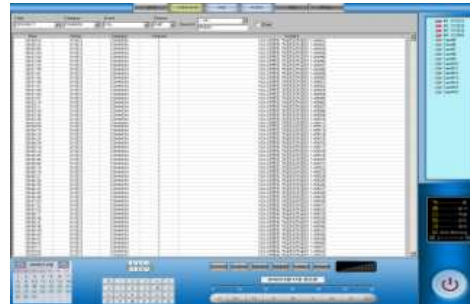
- N(D)VR 6.0 Software features
- Loading VCA Hardware and Software PC Open of evervision
 - DVR Card and IP Camera
 - Various function



Monitoring Display



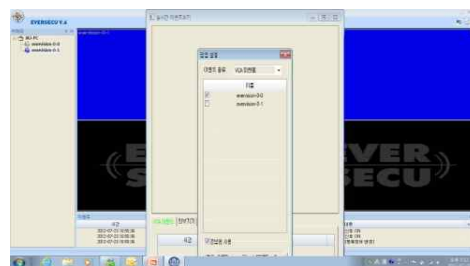
Setup Display



Day alarm serch



GIS Display



Popup setup

VCA 카운팅 액셀 변환 보고서 - 출입자의 인원통계 및 차량통계

카메라	2008	2009	2010	2011	2012	2013	2014	2015	2016	2017	2018	2019	2020	2021	2022	2023	2024
Camera01	10	20	30	40	50	60	70	80	90	100	110	120	130	140	150	160	170
Camera02	15	25	35	45	55	65	75	85	95	105	115	125	135	145	155	165	175
Camera03	20	30	40	50	60	70	80	90	100	110	120	130	140	150	160	170	180
Camera04	25	35	45	55	65	75	85	95	105	115	125	135	145	155	165	175	185
Camera05	30	40	50	60	70	80	90	100	110	120	130	140	150	160	170	180	190
Camera06	35	45	55	65	75	85	95	105	115	125	135	145	155	165	175	185	195
Camera07	40	50	60	70	80	90	100	110	120	130	140	150	160	170	180	190	200
Camera08	45	55	65	75	85	95	105	115	125	135	145	155	165	175	185	195	205
Camera09	50	60	70	80	90	100	110	120	130	140	150	160	170	180	190	200	210
Camera10	55	65	75	85	95	105	115	125	135	145	155	165	175	185	195	205	215
Camera11	60	70	80	90	100	110	120	130	140	150	160	170	180	190	200	210	220
Camera12	65	75	85	95	105	115	125	135	145	155	165	175	185	195	205	215	225

- Counting serch : Excell Print

Inteligent CCTV VCA Various Function

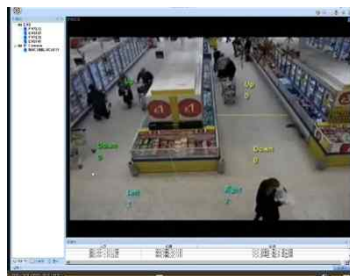
1. Fire Function



2. Smoke Function



3. Counting- People, Vech (Enter and Exit, Direction))



5. Auto Tracking(ESIPE4100)



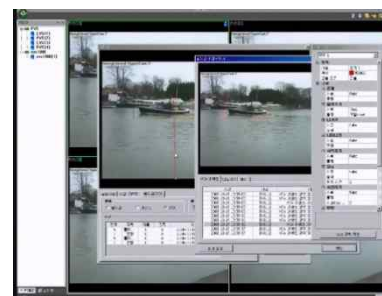
7. Abandoned Function



4. Dwell Function



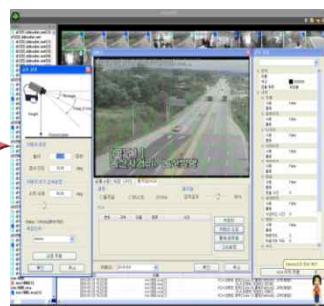
6. Appear and Disappear Line



8. Stopping Car Function



* Real time information :
Alarm, Popup, sound,



Alarm